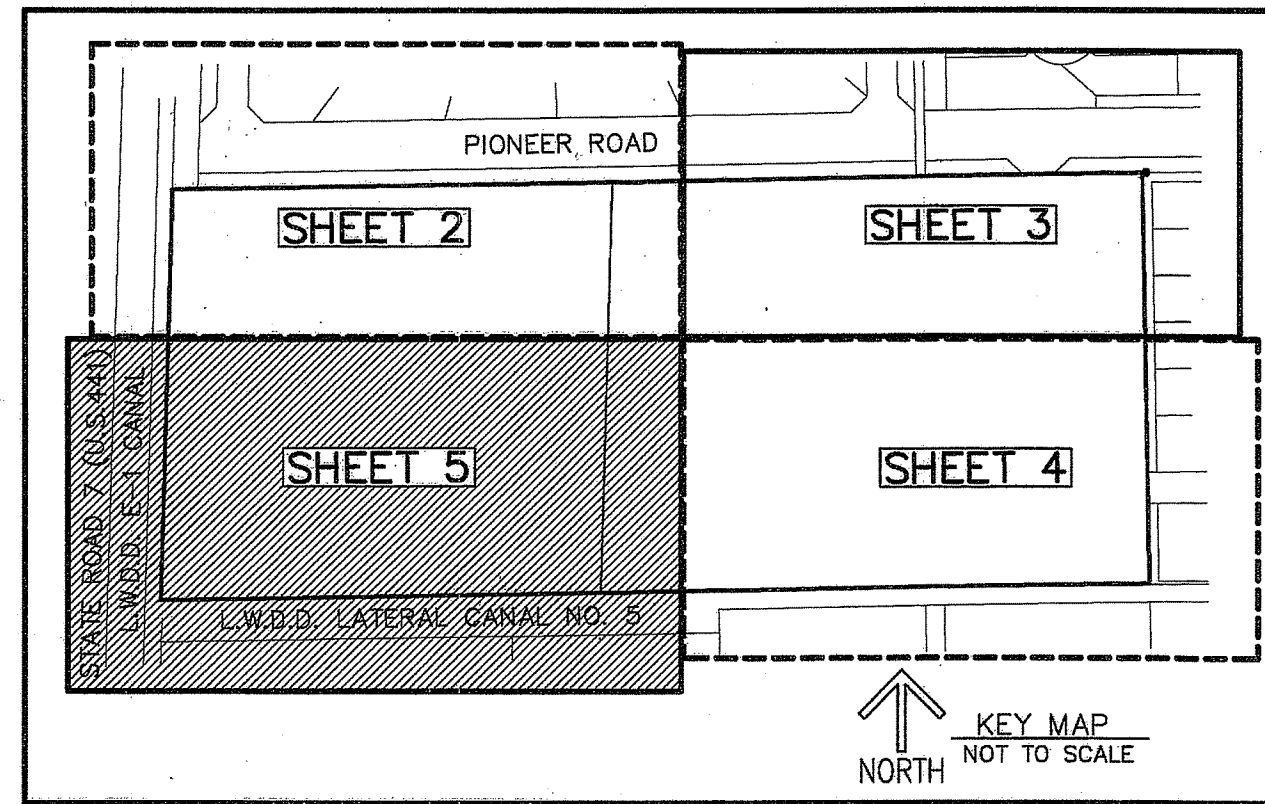


THIS INSTRUMENT PREPARED BY
 DAVID P. LINDLEY
 OF
CAULFIELD and WHEELER, INC.
 SURVEYORS - ENGINEERS - PLANNERS
 7900 GLADES ROAD, SUITE 100
 BOCA RATON, FLORIDA 33434 - (561)392-1991

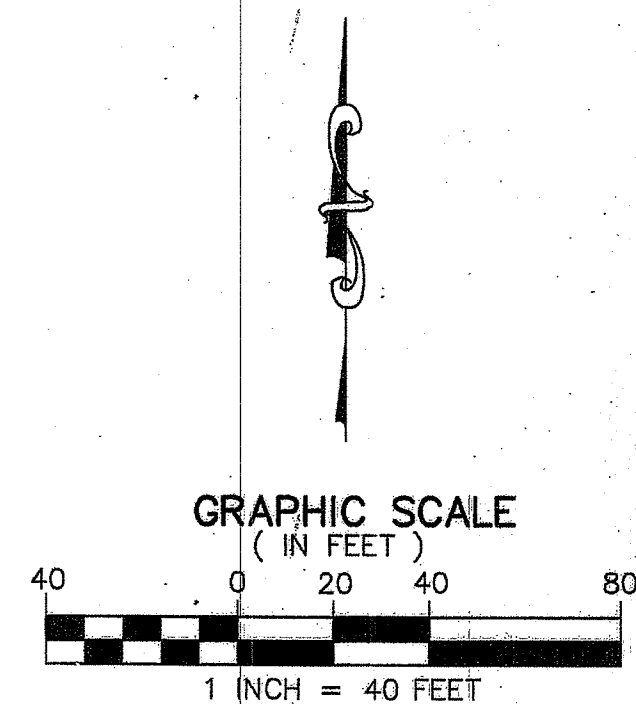
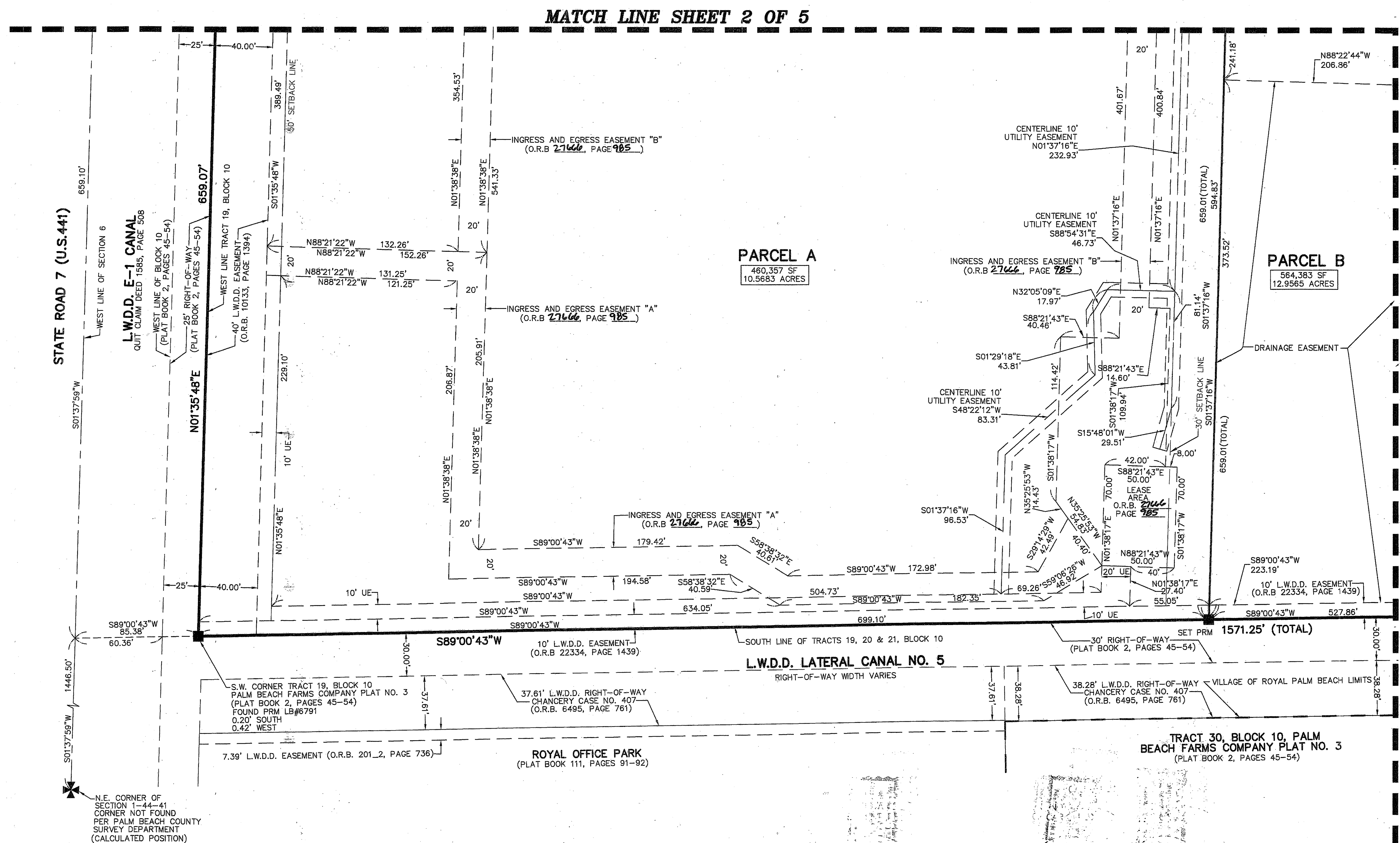
PEBB PIONEER

BEING A REPLAT OF TRACT 19, TRACT 20, THE WEST HALF (W.1/2) OF TRACT 21 AND THAT PORTION OF THE 30.00 FOOT ROAD RIGHT-OF-WAY LYING BETWEEN SAID TRACTS 20 AND 21, BLOCK 10, THE PALM BEACH FARMS COMPANY PLAT NO. 3, AS RECORDED IN PLAT BOOK 2, PAGES 45 THROUGH 54, PALM BEACH COUNTY, FLORIDA, LYING IN SECTION 6, TOWNSHIP 44 SOUTH, RANGE 42 EAST, VILLAGE OF ROYAL PALM BEACH, PALM BEACH COUNTY, FLORIDA.



STATE OF FLORIDA
 COUNTY OF PALM BEACH
 THIS PLAT WAS FILED FOR
 RECORD AT _____ M.
 THIS _____ DAY OF _____
 A.D. 201____ AND DULY RECORDED
 IN PLAT BOOK _____ ON
 PAGES _____ AND _____
 SHARON R. BOCK
 CLERK AND COMPTROLLER
 BY: _____
 DEPUTY CLERK

SHEET 5 OF 5



- LEGEND/ABBREVIATIONS**
- ⊕ - CENTERLINE
 - Δ - DELTA (CENTRAL ANGLE)
 - DE - DRAINAGE EASEMENT
 - E - EASTING
 - FPL - FLORIDA POWER & LIGHT CO.
 - L - ARC LENGTH
 - LAE - LIMITED ACCESS EASEMENT
 - LBE - LANDSCAPE BUFFER EASEMENT
 - LB - LICENSED BUSINESS
 - LSE - LIFT STATION EASEMENT
 - L.W.D.D. - LAKE WORTH DRAINAGE DISTRICT
 - O.R.B. - OFFICIAL RECORD BOOK
 - PBCUE - PALM BEACH COUNTY UTILITY EASEMENT
 - R - RADIUS
 - UE - UTILITY EASEMENT
 - PRM - DENOTES PERMANENT REFERENCE MONUMENT
 4" x 4" x 24" CONCRETE MONUMENT WITH ALUMINUM DISK STAMPED "C&W PRM LB3591"